



# First Coast Guard District Report to the NEFMC

26 September 2011

Captain Pete DeCola



# Enforcement



01 June – 22 September

- **Fishing Vessel Boardings – 444**
- **Fishery Violations Issued – 23**
  
- **Observed Compliance Rate: 94.8**
- **Last Reported Compliance Rate: 98.3**
  - **Sea Scallop compliance rate 93.7% (95.9 YTD)**



# Safety

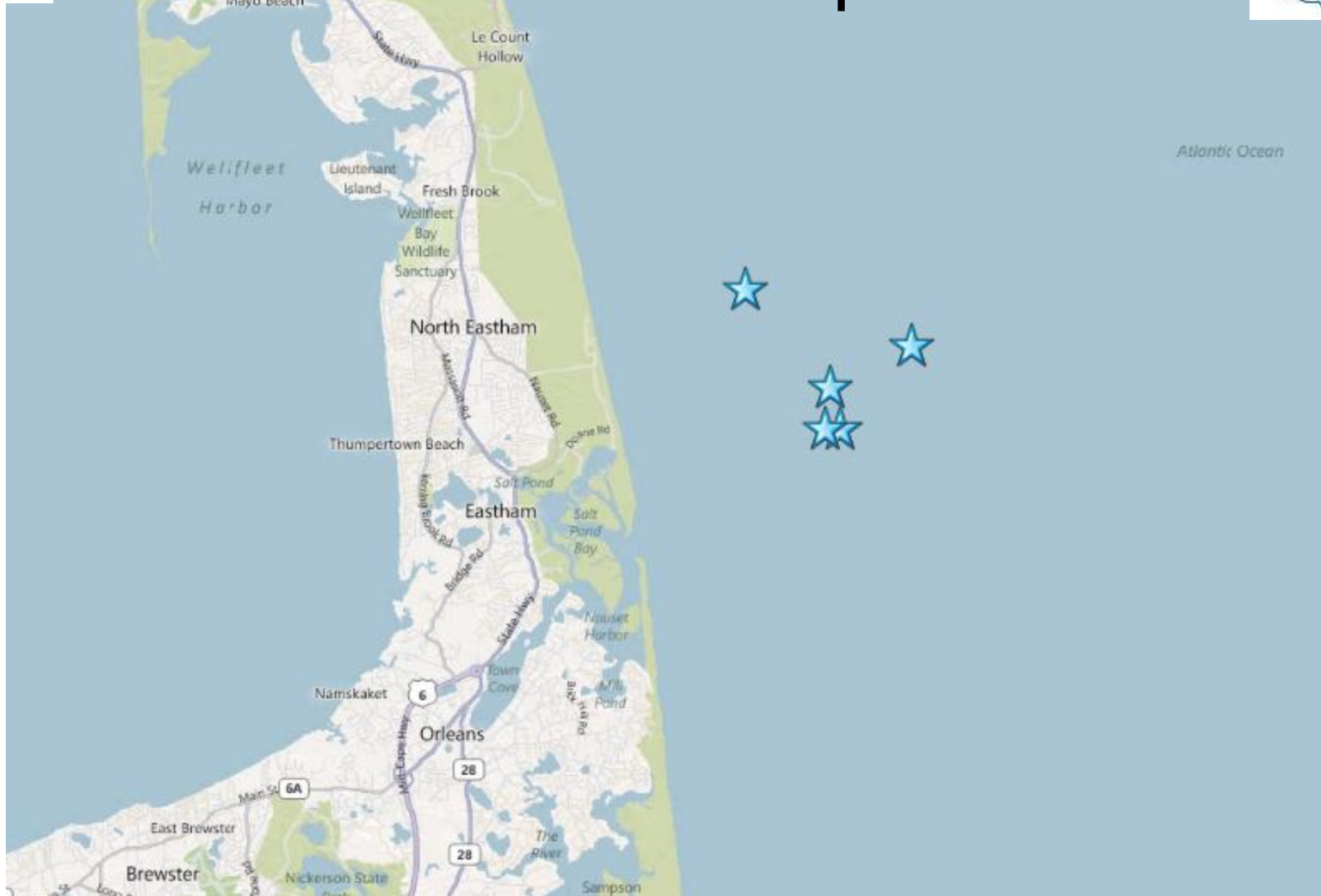


01 June – 22 September

- **Fishing Vessel Boardings – 444**
- **Safety Violations Issued –**
  - 128 violations to 69 individual vessels
- **Observed Compliance Rate: 85.4 %**
- **Last Reported Compliance Rate: 86.2%**



# EEZ incursion Scallop violations



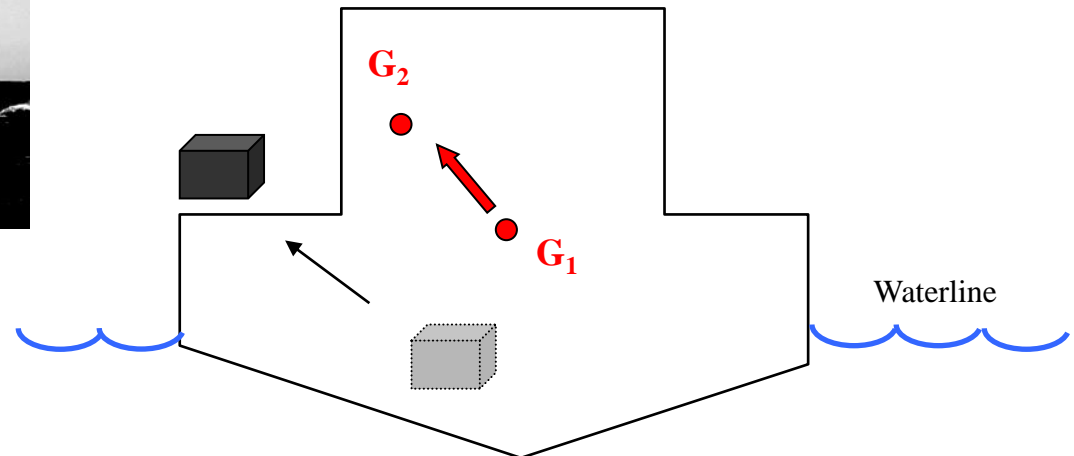


# Hidden Compartment





# Hidden Compartments



“G” moves in the direction of a weight **SHIFT**. Especially detrimental to vessel stability if weight is shifted high as “G” will move up and the boat will become top heavy